



HELPING HAND FOR RELIEF AND DEVELOPMENT

FREQUENTLY ASKED QUESTIONS:

How much does it cost to sponsor a child?

The cost of one on one sponsorship is \$2/day which is \$60/month and \$720/year.

What does the cost cover?

The cost covers rehabilitation services, assistive devices and mobility aids, transportation to and from HHRD rehabilitation centers, general health services, education support, skills development, financial and food support, social inclusion events, counseling and training workshop for the children and their caretakers.

How long can I sponsor a child with disability?

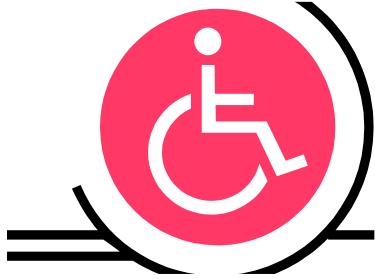
We recommend that a donor sponsors a child for at least a year. However, one can continue to sponsor the child until the age of 18, which is when the child graduates from the program.

How can I keep track of my sponsored child?

Once your sponsorship donation is settled in our system, we make the profile available to you through an email notification. You will be required to log into your online account to view the child's profile. We will make a medical report available to you within the given year of the sponsorship. A rehabilitation progress report is shared with the donor once every 2 years. An email system notification will go out to the donors email when a new report is uploaded online.

Can I give more than the designated amount of \$2/day for sponsorship?

For specific one-to-one sponsorship, please donate the specified \$2 a day or \$720/year. For the general children with disability support fund, HHRD will accept any amount that you would like to donate.



What are the requirements necessary for a child to be in this program?

To be part of the program, the child has to be below the age of 18 and a resident of the local district. The annual household income of the beneficiary should be below the poverty line as defined by the country of residence. The child is required to have at least one or more of the four types of disabilities, which include physical, intellectual, visual or hearing impairments.

Will I be able to connect with the child?

HHRD will be happy to send out any letters or cards that you wish to send to your sponsored child. Since these children generally struggle with communication issues, we might not be able to provide the child's response to you. If you are visiting the country your sponsored child is from, HHRD can assist with your visit with the child and the family in a safe space upon request and completion of the necessary documentation.